

Sampler Flower Pin Cushion



Sampler Flower Pin Cushion

Stitch count: 39 W x 61 H
28 count cream fabric

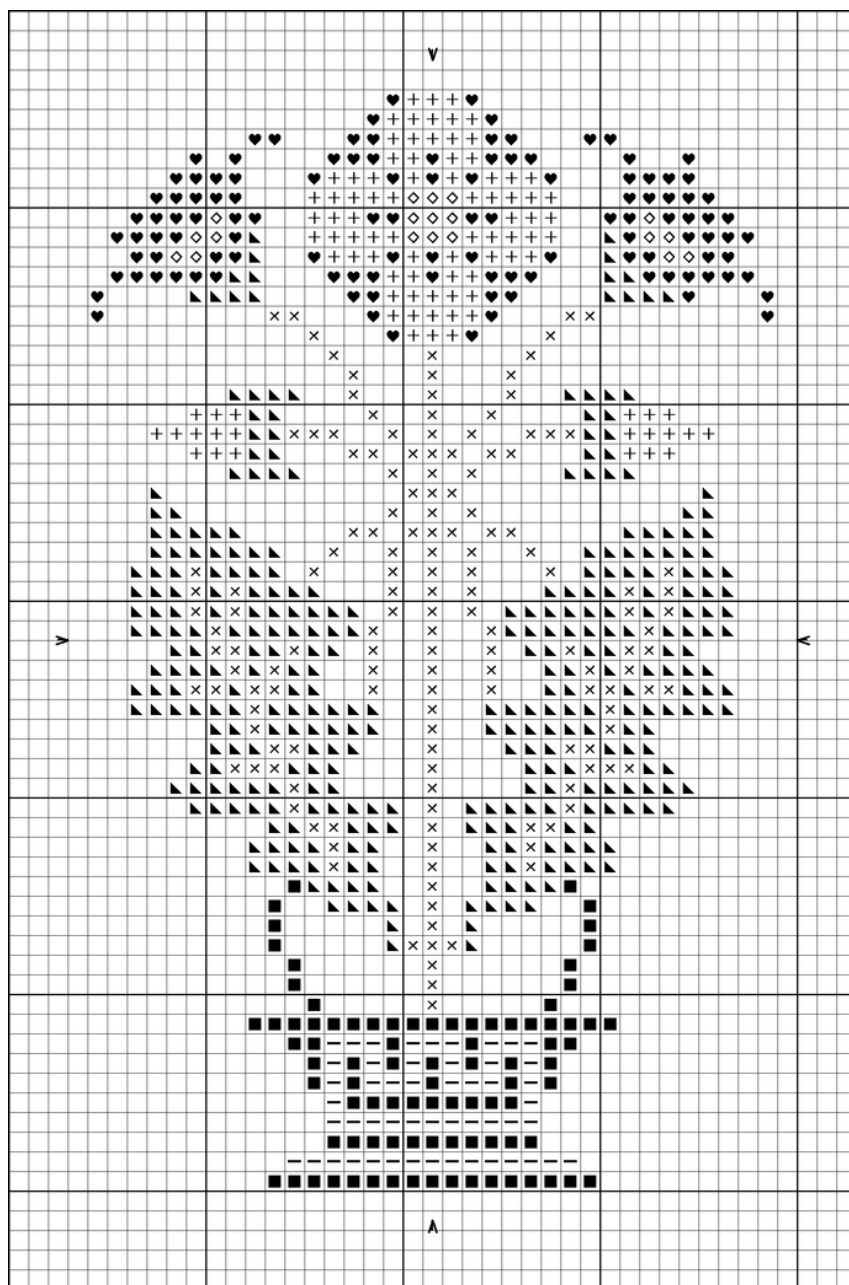
Finished size (stitched over two threads):
3" W x 4 1/2" H

- Model was stitched on 28 count cream fabric over two threads using two strands of floss.
- Cut fabric 9" x 11" which allows 3" for finishing.



Finishing Instructions

- Trim finished piece so there is 1 1/4 " border around entire design.
- Cut backing fabric to same size.
- With right sides facing, sew backing to the stitched piece with a 3/4" seam allowance. Leave a 1 1/2" opening at the bottom for stuffing.
- Turn right side out and stuff.
- Hand sew cording or trim around the edge, tucking the ends into the opening and then hand stitch the opening closed.



Symbol	Color	Company	DMC Equivalent
■	Molasses	Weeks Dye Works	3031
—	Bright Leaf	Weeks Dye Works	3829
♥	Loganberry	Gentle Arts	3740
+	Country Lane	Classic Colorworks	3861
▲	Mossy	Classic Colorworks	471
×	Endive	Gentle Arts	3011
◇	Buttercrunch	Gentle Arts	676

